



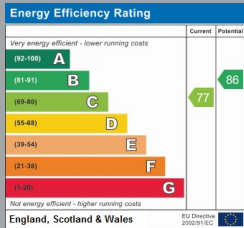
FLAT 11 ARDMORE LODGE
LOWER PARKSTONE
Dorset, BH14 8SA

£900 PCM

goadsby.com

A SPACIOUS ONE BEDROOM FLAT LOCATED IN ASHLEY CROSS.

- One Bedroom Flat
- Views towards Poole Harbour
- Offered Unfurnished
- Garage
- EPC Rating: Band C



Reference: 211984

Deposit Amount: £1,038.46

Council Tax Band: A

Furnishing: Unfurnished

Heating Type: Gas Central Heating

Parking: Garage and Ad-hoc Parking

Utilities:

- Mains Supply Gas
- Mains Supply Electricity
- Mains Supply Water - metered

Drainage: Mains Supply Drainage

Broadband: Refer to Ofcom website www.ofcom.org.uk/phones-and-broadband

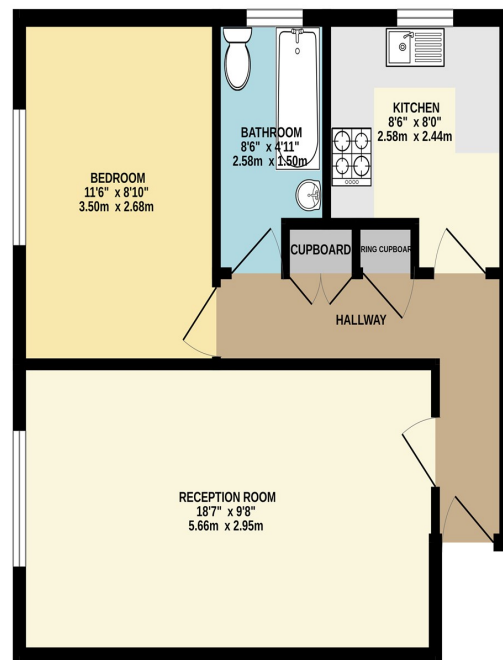
Mobile Signal: Refer to Ofcom website www.ofcom.org.uk/phones-and-broadband

Flood Risk: For more information refer to gov.uk, check long term flood risk www.gov.uk/check-long-term-flood-risk

A spacious one bedroom first floor flat is located in the popular area of Ashley Cross. The property is offered on an unfurnished basis and has views towards Poole Harbour, ad-hoc parking and a garage.

Please note the marketing photos for this property were taken before the current tenancy commenced in 2022

GROUND FLOOR



This Floor Plan is for guidance only and is NOT to SCALE
Made with Metago 6205

PLEASE NOTE:

Measurements quoted are approximate and for guidance only. Fixtures, fittings, services & appliances have not been tested and therefore no guarantee can be given that they are in working order. Images have been produced for information and it cannot be inferred that any item shown is included with the property. These particulars are believed to be correct but their accuracy is not guaranteed and they do not constitute an offer or form part of a contract. Solicitors are specifically requested to verify the sales particulars details in the pre-contract enquiries, in particular: price, local and other searches.

Goadsby & Harding (Residential) Ltd

Registered Office: 99 Holdenhurst Road, Bournemouth, Dorset BH8 8DY Registered in England No. 1871280

01202 686555
poole@goadsby.com

245 High Street North
Poole, Dorset
BH15 1DX