



5 SANDHURST ROAD

POLYGON

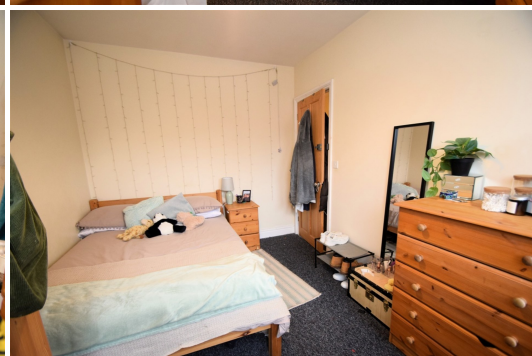
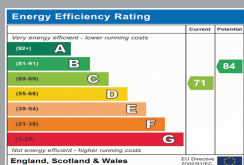
Hampshire, SO15 2FN

£2,150 PCM

goadsby.com

STUDENT LET - FIVE DOUBLE BEDROOM HOUSE LOCATED IN THE POLYGON.

- Five bedroom house
- Furnished
- Approx £99pp/pw
- All double bedrooms
- EPC Rating - Band C



Reference: 1158090

Deposit Amount: £2,480

Council Tax: Band C

Furnishing: Furnished

Heating Type: Gas fired hot water radiators

Parking: On street permit parking via Southampton City Council

Utilities:

- Mains Supply Electricity
- Mains Supply Gas
- Mains Supply Water - metered

Drainage: Mains Supply Drainage

Broadband: Refer to Ofcom website www.ofcom.org.uk/phones-and-broadband

Mobile Signal: Refer to Ofcom website www.ofcom.org.uk/phones-and-broadband

Flood Risk: Low. For more information refer to gov.uk, check long term flood risk www.gov.uk/check-long-term-flood-risk

Spacious five bedroom student house located in the Polygon. Short walk away from local amenities and Solent University. Downstairs the property comprises, two double bedrooms and a modern open plan kitchen/living area. Upstairs are a further three double bedrooms, WC and separate bathroom.

Further benefits include permit parking via Southampton City Council.



PLEASE NOTE:

Measurements quoted are approximate and for guidance only. Fixtures, fittings, services & appliances have not been tested and therefore no guarantee can be given that they are in working order. Images have been produced for information and it cannot be inferred that any item shown is included with the property. These particulars are believed to be correct but their accuracy is not guaranteed and they do not constitute an offer or form part of a contract. Solicitors are specifically requested to verify the sales particulars details in the pre-contract enquiries, in particular: price, local and other searches.

Goadsby & Harding (Residential) Ltd
Registered Office: 99 Holdenhurst Road, Bournemouth, Dorset BH8 8DY Registered in England No. 1871280

02380 710400
southamptonlettings@goadsby.com

54 London Road
Southampton, Hampshire
SO15 2AH