



FLAT 10 STIRLING COURT, 28 MANOR ROAD
BOURNEMOUTH
Dorset, BH1 3EZ

SPACIOUS THREE BEDROOM TOP FLOOR APARTMENT WITH PARKING.

- Three Bedroom Apartment
- Top Floor
- Offered Unfurnished
- One Allocated Parking Space
- EPC Rating: Band D



| Energy Efficiency Rating | |
|---|-------------------|
| Very energy efficient - lower running costs | Current Potential |
| A (92-100) | 79 |
| B (81-91) | |
| C (69-80) | |
| D (55-68) | |
| E (39-54) | |
| F (21-38) | |
| G (1-20) | |
| Not energy efficient - higher running costs | |

Reference: 869192

Deposit Amount: £1384.61

Council Tax: Band C

Furnishing: Unfurnished

Heating Type: Electric overnight storage heaters

Parking: Allocated Parking Space

Utilities: Ask Agent

- Mains Supply Electricity
- Mains Supply Gas
- Mains Supply Water - metered

Drainage: Mains Supply Drainage

Broadband: Refer to Ofcom website www.ofcom.org.uk/phones-and-broadband

Mobile Signal: Refer to Ofcom website www.ofcom.org.uk/phones-and-broadband

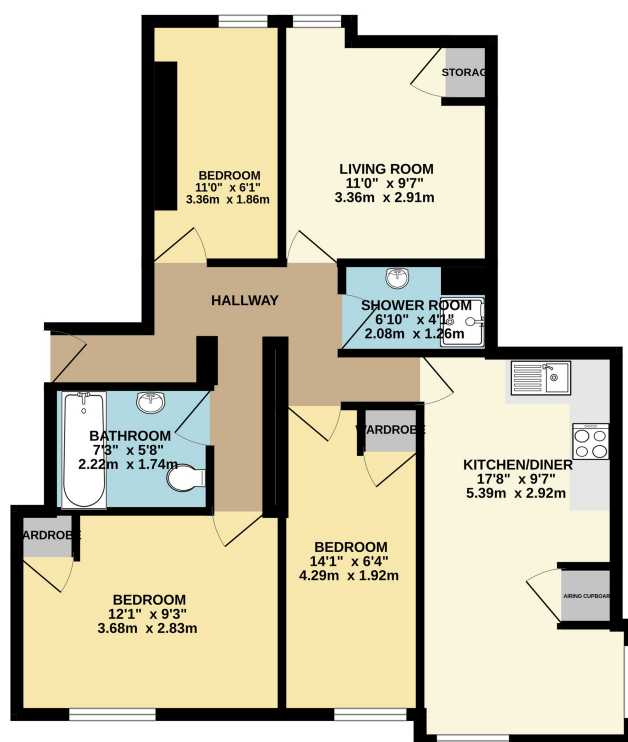
Flood Risk: For more information refer to gov.uk, check long term flood risk www.gov.uk/check-long-term-flood-risk

This spacious three bedroom apartment located in the popular residential area of the East Cliff is offered to the market unfurnished.

The property includes a spacious living room and a kitchen/Diner area. There is a communal laundry area for only residents of the block. One parking space included.

Please note the marketing photos were taken prior to the current tenancy in 2019.

GROUND FLOOR



PLEASE NOTE:

Measurements quoted are approximate and for guidance only. Fixtures, fittings, services & appliances have not been tested and therefore no guarantee can be given that they are in working order. Images have been produced for information and it cannot be inferred that any item shown is included with the property. These particulars are believed to be correct but their accuracy is not guaranteed and they do not constitute an offer or form part of a contract. Solicitors are specifically requested to verify the sales particulars details in the pre-contract enquiries, in particular: price, local and other searches.

This Floor Plan is for guidance only and is NOT to SCALE. Made with Metropix ©2024

01202 544644
 bournemouthlettings@goadsby.com

114 Old Christchurch Road
 Bournemouth, Dorset
 BH1 1LU

Goadsby & Harding (Residential) Ltd
 Registered Office: 99 Holdenhurst Road, Bournemouth, Dorset BH8 8DY Registered in England No. 1871280