



1 WYVERN CLOSE

POOLE

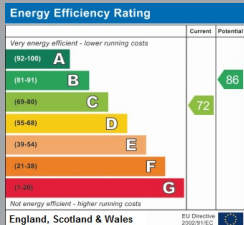
Dorset, BH12 4HE

£1,500 PCM

[goadsby.com](https://www.goadsby.com)

# A RECENTLY REFURBISHED THREE BEDROOM SEMI-DETACHED HOUSE.

- Three Bedroom Semi-Detached House
- Garden & Driveway Parking
- Modern Throughout
- Offered Unfurnished
- EPC Rating: Band C



Reference: 224502

**Deposit Amount:** £1,730.76

**Council Tax Band:** C

**Furnishing:** Unfurnished

**Heating Type:** Gas Central Heating

**Parking:** Driveway

**Utilities:**

- Mains Supply Electricity
- Mains Supply Gas
- Mains Supply Water - metered

**Drainage:** Mains Supply Drainage

**Broadband:** Refer to Ofcom website  
[www.ofcom.org.uk/phones-and-broadband](http://www.ofcom.org.uk/phones-and-broadband)

**Mobile Signal:** Refer to Ofcom website  
[www.ofcom.org.uk/phones-and-broadband](http://www.ofcom.org.uk/phones-and-broadband)

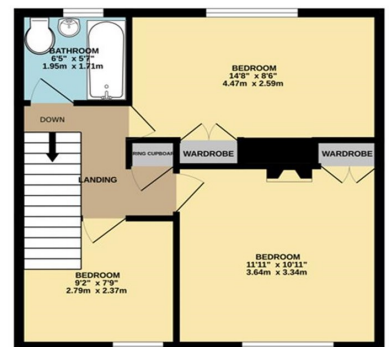
**Flood Risk:** For more information refer to gov.uk, check long term flood risk  
[www.gov.uk/check-long-term-flood-risk](http://www.gov.uk/check-long-term-flood-risk)

This spacious and well presented three bedroom semi-detached house is offered on an unfurnished basis. The property is modern throughout and has recently been re-decorated throughout with newly fitted carpets and offers two reception rooms, garden with shed and driveway parking.

GROUND FLOOR



1ST FLOOR



This Floor Plan is for guidance only and is NOT TO SCALE  
Made with Metropix ©2024

**PLEASE NOTE:**

Measurements quoted are approximate and for guidance only. Fixtures, fittings, services & appliances have not been tested and therefore no guarantee can be given that they are in working order. Images have been produced for information and it cannot be inferred that any item shown is included with the property. These particulars are believed to be correct but their accuracy is not guaranteed and they do not constitute an offer or form part of a contract. Solicitors are specifically requested to verify the sales particulars details in the pre-contract enquiries, in particular: price, local and other searches.

Goadsby & Harding (Residential) Ltd  
Registered Office: 99 Holdenhurst Road, Bournemouth, Dorset BH8 8DY Registered in England No. 1871280

01202 686555  
poole@goadsby.com

245 High Street North  
Poole, Dorset  
BH15 1DX