

15 SUMMERFIELDS
BOURNEMOUTH
Dorset, BH7 7RN

£2,100 PCM

[goadsby.com](https://www.goadsby.com)

FOUR BEDROOM DETACHED HOUSE IN QUITE CUL-DE- SAC LOCATION.

- Four bedroom detached house
- Unfurnished
- Garden & Garage
- Driveway parking
- EPC Rating - Band D



We are delighted to present this stunning four-bedroom detached house, available for rent at Summerfields in Littledown. This modern property boasts a spacious and contemporary design, perfect for families seeking a comfortable and stylish living space.

The property comprises two well-appointed reception rooms, two modern bathrooms, and four generously sized bedrooms, providing ample space for relaxation and entertainment. The property is offered on an unfurnished basis.

The house benefits from a private garden and garage, perfect for outdoor relaxation and storage, as well as driveway parking for added convenience.

Located in a sought-after area, this property is ideally situated for easy access to local amenities, including shops, restaurants, and transport links. The monthly rental price for this property is £2100 PCM, offering exceptional value for such a high-quality home.

Overall, this property is a fantastic opportunity to secure a stylish and spacious living space in a desirable location. We highly recommend viewing this property to appreciate all it has to offer.

Energy Efficiency Rating	
Current	Potential
<small>Not energy efficient - higher running costs</small>	
<small>EU Directive 2002/91/EC</small>	
<small>England & Wales</small>	
<small>www.epc.co.uk</small>	

Reference: 580488

Deposit amount £2,423.07
Council Tax- Band E

Furnishing: Unfurnished

Heating Type: Gas fired hot water radiators

Parking: Driveway

Utilities: Ask agent
Mains Supply Electricity
Mains Supply Gas
Mains Supply Water - metered

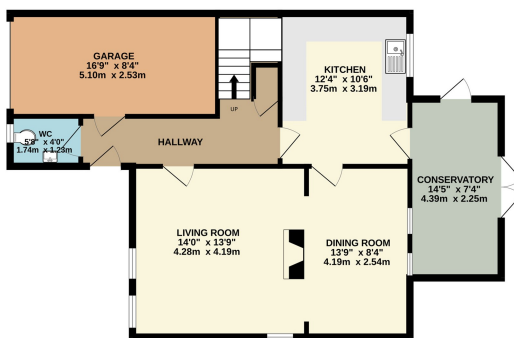
Drainage: Mains Supply Drainage

Broadband: Refer to Ofcom website
www.ofcom.org.uk/phones-and-broadband

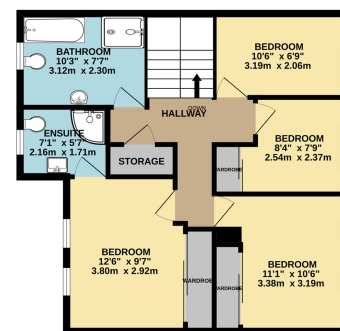
Mobile Signal: Refer to Ofcom website
www.ofcom.org.uk/phones-and-broadband

Flood Risk: For more information refer to
gov.uk, check long term flood risk
www.gov.uk/check-long-term-flood-risk

GROUND FLOOR



1ST FLOOR



This Floor Plan is for guidance only and is NOT to SCALE
Made with Metropix ©2024

PLEASE NOTE:

Measurements quoted are approximate and for guidance only. Fixtures, fittings, services & appliances have not been tested and therefore no guarantee can be given that they are in working order. Images have been produced for information and it cannot be inferred that any item shown is included with the property. These particulars are believed to be correct but their accuracy is not guaranteed and they do not constitute an offer or form part of a contract. Solicitors are specifically requested to verify the sales particulars details in the pre-contract enquiries, in particular: price, local and other searches.

Goadsby & Harding (Residential) Ltd
Registered Office: 99 Holdenhurst Road, Bournemouth, Dorset BH8 8DY Registered in England No. 1871280

01202 544644
bournemouthlettings@goadsby.com

114 Old Christchurch Road
Bournemouth, Dorset
BH1 1LU