



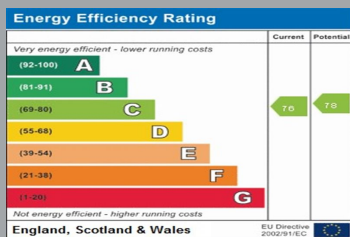
**34 SILCHESTER PLACE**  
HYDE (WINCHESTER)  
Hampshire, SO23 7FT



## TWO BEDROOM APARTMENT WITH ALLOCATED PARKING IN WINCHESTER CITY CENTRE.

- Two Bedroom Apartment
- Unfurnished
- Allocated Parking
- Central Location

£1,400 PCM



Reference: 838197

This large two bedroom, ground floor apartment sits in an exceptional, central location.

The property comprises; a large primary bedroom with en-suite, second double bedroom, family bathroom and an open and bright lounge/diner offering excellent space and leading onto the kitchen with in-built appliances. Finishing off this well positioned apartment is an allocated parking space.

Located in Winchester City Centre, the property benefits from excellent commuter links being just a stone's throw from Winchester mainline station, which services London Waterloo in approximately one hour.

The property further benefits form double glazed windows and gas fired hot water radiators.



**Deposit Amount:** £1,615

**Council Tax:** Band D

**Furnishing:** Unfurnished

**Heating Type:** Gas fired hot water radiators

**Parking:** Allocated Parking Space

**Utilities:**

- Mains Electricity
- Mains Gas
- Mains Water - metered

**Drainage:** Mains Private Supply Drainage

**Broadband:** Refer to Ofcom website  
[www.ofcom.org.uk/phones-and-broadband](http://www.ofcom.org.uk/phones-and-broadband)

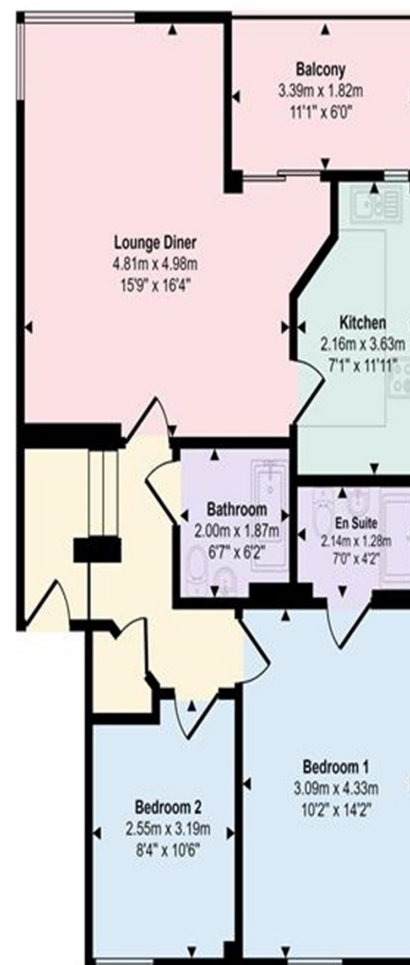
**Mobile Signal:** Refer to Ofcom website  
[www.ofcom.org.uk/phones-and-broadband](http://www.ofcom.org.uk/phones-and-broadband)

**Flood Risk:** For more information refer to  
[gov.uk](http://gov.uk), check long term flood risk  
[www.gov.uk/check-long-term-flood-risk](http://www.gov.uk/check-long-term-flood-risk)



01962 620444  
winchester@goadsby.com

45 Jewry Street  
Winchester, Hampshire  
SO23 8RY



Floorplan

This floorplan is only for illustrative purposes and is not to scale. Measurements of rooms, doors, windows, and any items are approximate and no responsibility is taken for any error, omission or mis-statement. Icons of items such as bathroom suites are representations only and may not look like the real items. Made with Made Snappy 360.

**PLEASE NOTE:**

Measurements quoted are approximate and for guidance only. Fixtures, fittings, services & appliances have not been tested and therefore no guarantee can be given that they are in working order. Images have been produced for information and it cannot be inferred that any item shown is included with the property. These particulars are believed to be correct but their accuracy is not guaranteed and they do not constitute an offer or form part of a contract. Solicitors are specifically requested to verify the sales particulars details in the pre-contract enquiries, in particular: price, local and other searches.

**Goadsby & Harding (Residential) Ltd**

Registered Office: 99 Holdenhurst Road, Bournemouth, Dorset BH8 8DY Registered in England No. 1871280

