



FLAT 8
SOUTHBOURNE
Dorset, BH6 5AE

£1,150
PER CALENDAR MONTH

goadsby.com

ONE BEDROOM APARTMENT

- One Bedroom Apartment
- Off Road Parking
- Offered Unfurnished
- Convenient Location
- EPC Rating: Band C

Energy Efficiency Rating	
Current	Potential
<small>Energy efficiency class based on the following ranges:</small>	
<small>95-100 A</small>	
<small>81-94 B</small>	
<small>69-80 C</small>	
<small>55-68 D</small>	
<small>39-54 E</small>	
<small>21-38 F</small>	
<small>1-20 G</small>	
76	75
<small>Most energy efficient - higher rating costs</small>	
<small>England & Wales</small>	
<small>EU Directive 2002/91/EC</small>	
<small>www.epc.co.uk</small>	

Reference: 1116119

Deposit amount: £951.92

Council Tax: Band A

Furnishing: Unfurnished

Heating Type: Gas fired hot water radiators

Parking: Unallocated Off Road Parking Space

Utilities: Ask Agent

Mains Supply Electricity

Mains Supply Gas

Mains Supply Water - metered

Drainage: Mains Supply Drainage

Broadband: Refer to Ofcom website

www.ofcom.org.uk/phones-and-broadband

Mobile Signal: Refer to Ofcom website

www.ofcom.org.uk/phones-and-broadband

Flood Risk: For more information refer to

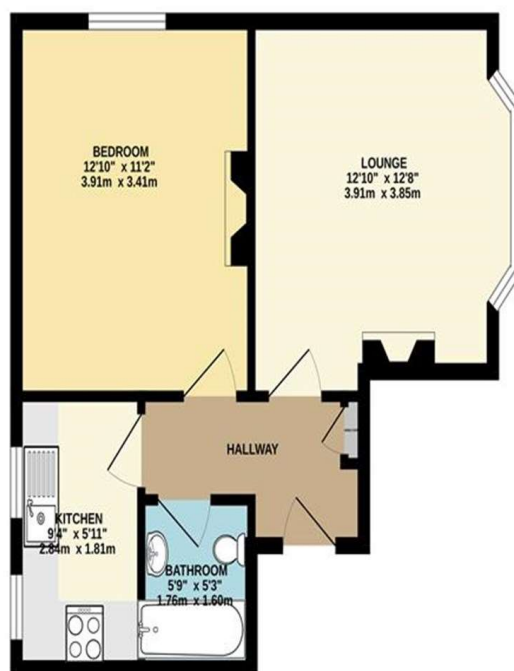
gov.uk, check long term flood risk

www.gov.uk/check-long-term-flood-risk



One bedroom top floor apartment located in Southbourne, close to the popular Southbourne Grove, transport links and award winning beaches. Offered to the market unfurnished with parking.

GROUND FLOOR



The Floor Plan is for guidance only and is NOT to SCALE.
Made with Mapbox CO21

PLEASE NOTE:

Measurements quoted are approximate and for guidance only. Fixtures, fittings, services & appliances have not been tested and therefore no guarantee can be given that they are in working order. Images have been produced for information and it cannot be inferred that any item shown is included with the property. These particulars are believed to be correct but their accuracy is not guaranteed and they do not constitute an offer or form part of a contract. Solicitors are specifically requested to verify the sales particulars details in the pre-contract enquiries, in particular: price, local and other searches.

Goadsby & Harding (Residential) Ltd

Registered Office: 99 Holdenhurst Road, Bournemouth, Dorset BH8 8DY Registered in England No. 1871280

01202 432188
southbourne@goadsby.com

31 Southbourne Grove

Southbourne
Bournemouth, Dorset
BH6 3QT